

# MOUNTING INSTRUCTIONS



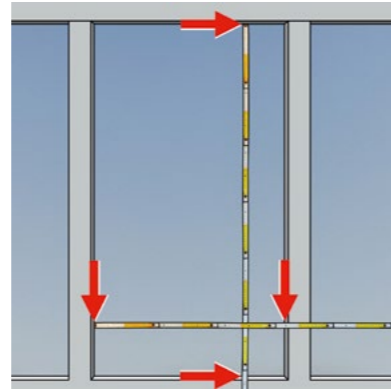
## PROCESSING TEMPERATURE

Please ensure that the outside temperature is at least 10°C when applying SEEN Elements.



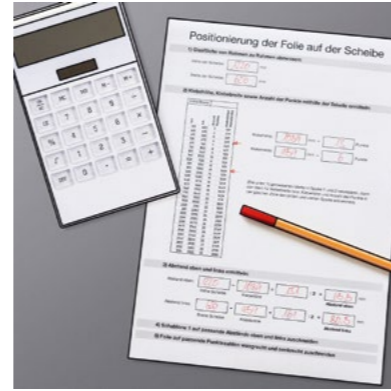
**01**

Clean pane



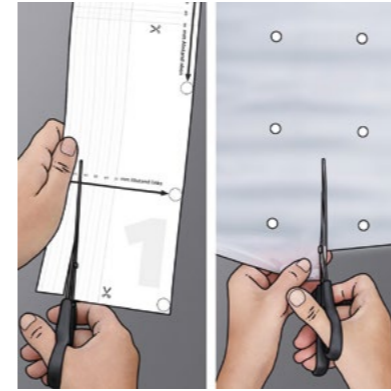
**02**

Measure the height and width of the pane



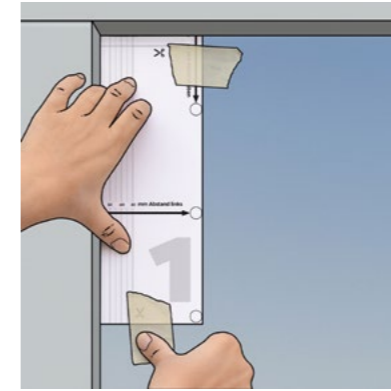
**03**

Transfer measurements. Determine the number of dots and calculate the distance between dot and frame



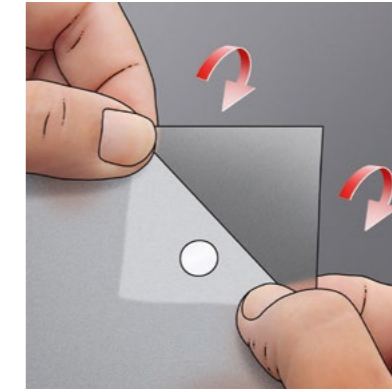
**04**

Cut template #1 to size and cut last the film sheet if necessary



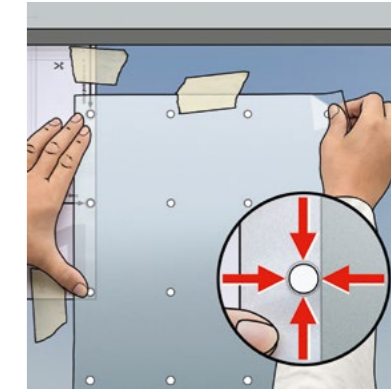
**05**

Fix template in the upper left corner of the pane



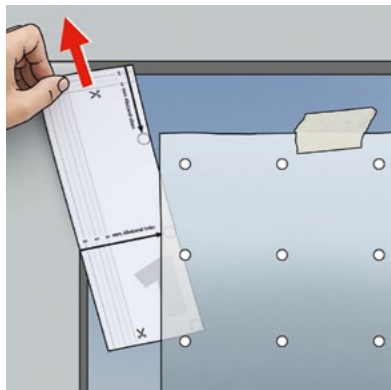
**06**

Fold back the upper right corner of the matt cover film



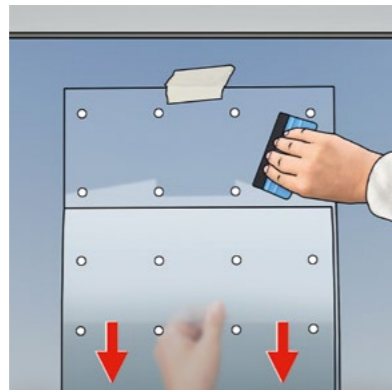
**07**

Align film to the template, fix with tape and at corner



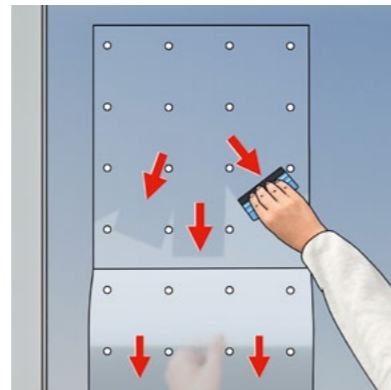
**08**

Remove template



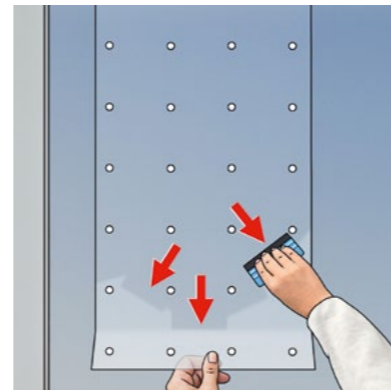
**09**

Peel off the matt cover film step by step from the right corner flat downwards, rub on the carrier film



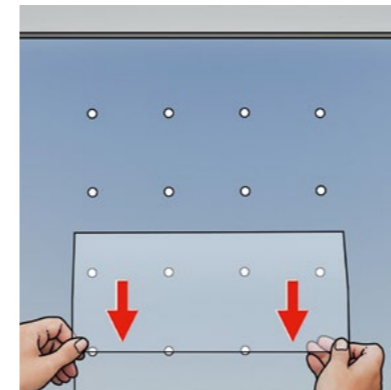
**10**

Rub the carrier film downwards and from the center outwards without wrinkles, peel off the cover film gradually



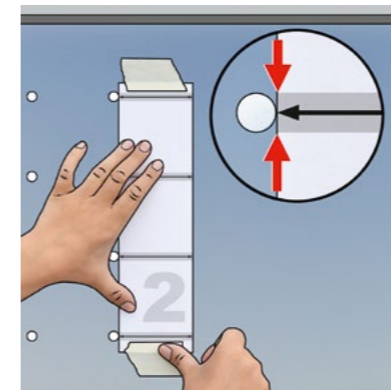
**11**

Remove cover film completely, then rub the carrier film down to the bottom



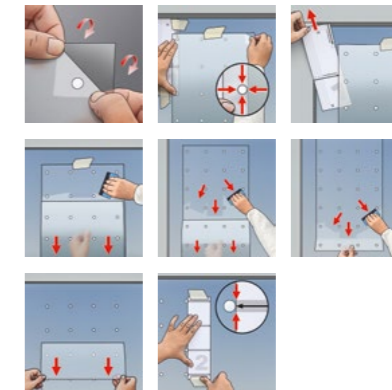
**12**

Peel off the carrier film flat along the pane



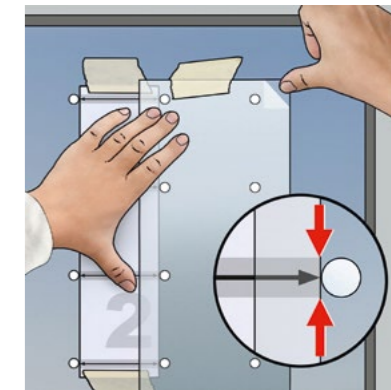
**13**

Align template #2 with dots and fix to pane



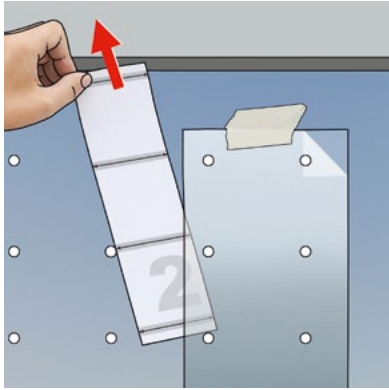
**14**

Repeat steps 06 to 13 if necessary



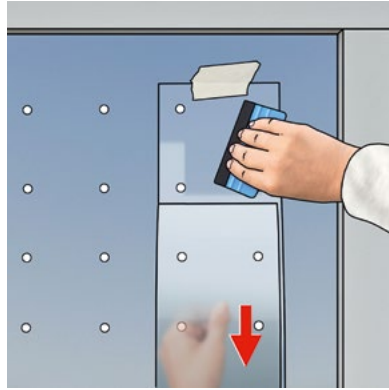
**15**

Align last film sheet cut in step 04 with the template, fix with tape and at corner



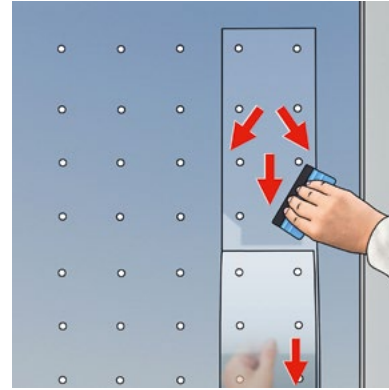
**16**

Remove template



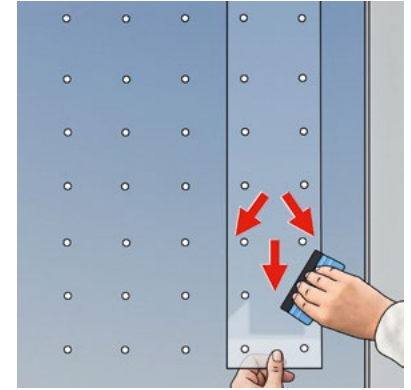
**17**

Peel off matt cover film flat downwards as in 09, 10, 11



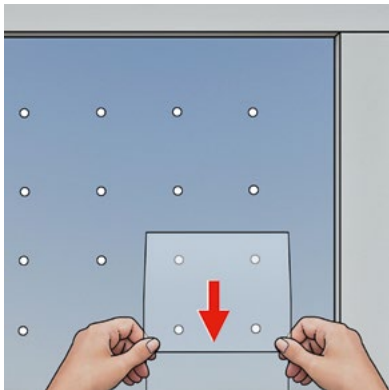
**18**

Peel off matt cover film and rub on carrier foil as in 09, 10, 11



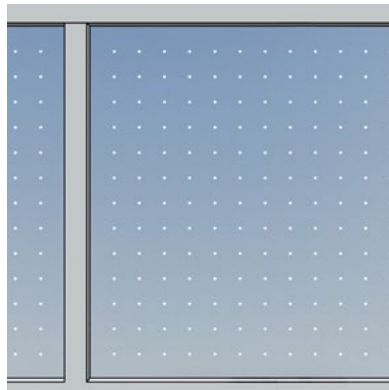
**19**

Rub the carrier film downwards and from the center to the outside without wrinkles



**20**

Peel off the carrier film flat along the pane



**21**

Final result

## CLEANING OF SEEN ELEMENTS

Only use pH-neutral liquid cleaning agents free of solid particles. Use rubber wipers, soft cotton, microfiber cloths, or non-scratching, lint-free paper towels.



SEEN AG

Lerchenfeldstrasse 3

9014 St. Gallen

Switzerland

+41 71 351 25 96

[hello@seen-group.com](mailto:hello@seen-group.com)

[www.en.seen-group.com](http://www.en.seen-group.com)